

116-12 Myrtle Avenue

Richmond Hill, NY 11418

Lease Offering Plan



COMMERCE

REALTY GROUP

Licensed Real Estate Brokerage

Property Highlights

- 40,000 sq. ft. office building
- Elevator in building
- 3rd floor individual office suites available
- 5-minute walk to J & Z subway lines
- On-site super
- All office/professional uses accepted
- Wifi & utilities included



Listing Team



Marc Richter

C: 646-342-8959

E: Marcrichter56@gmail.com

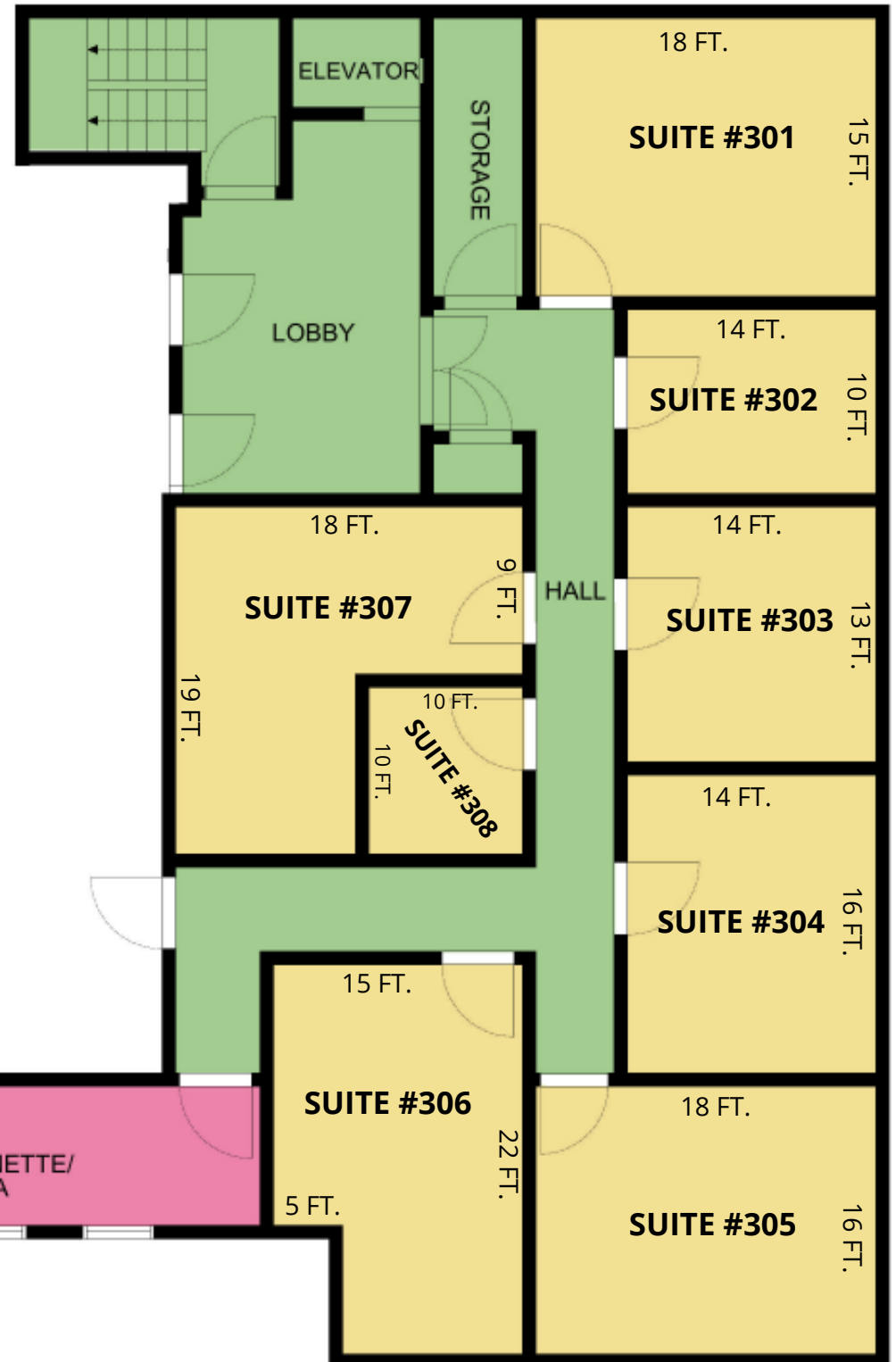


Floor Plan- Third Floor

Individual Office Suites

All Utilities Included + Wifi

Suite #	Monthly Rent	Sq. Ft.
301	\$1,750	270
302	\$1,000	146
303	\$1,200	182
304	\$1,400	221
305	\$1,750	280
306	\$1,700	300
307	\$1,500	245
308	\$600	100



Myrtle Avenue

Property Photos





