

116-12 Myrtle Avenue

Richmond Hill, NY 11418

Lease Offering Plan



COMMERCE

REALTY GROUP

Licensed Real Estate Brokerage

Property Highlights

- 40,000 sq. ft. office building
- Elevator in building
- 5-minute walk to J & Z subway lines
- On-site super
- All office/professional uses accepted
- Three spaces are available
 - 1,750 sq. ft. for \$3,800/mo
 - 3,000 sq. ft. for \$7,500/mo



Listing Broker



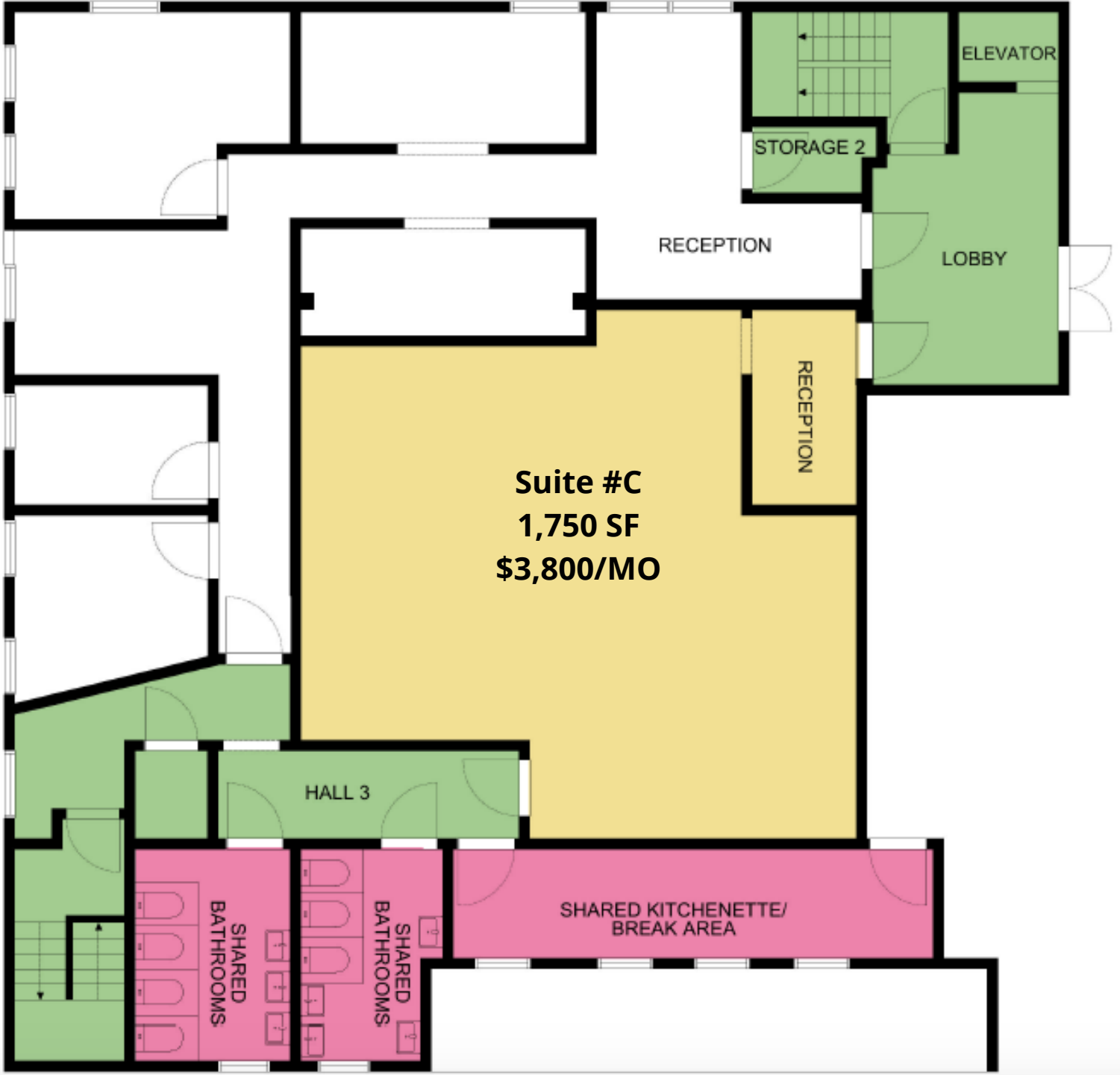
Marc Richter

C: 646-342-8959

E: Marcrichter56@gmail.com



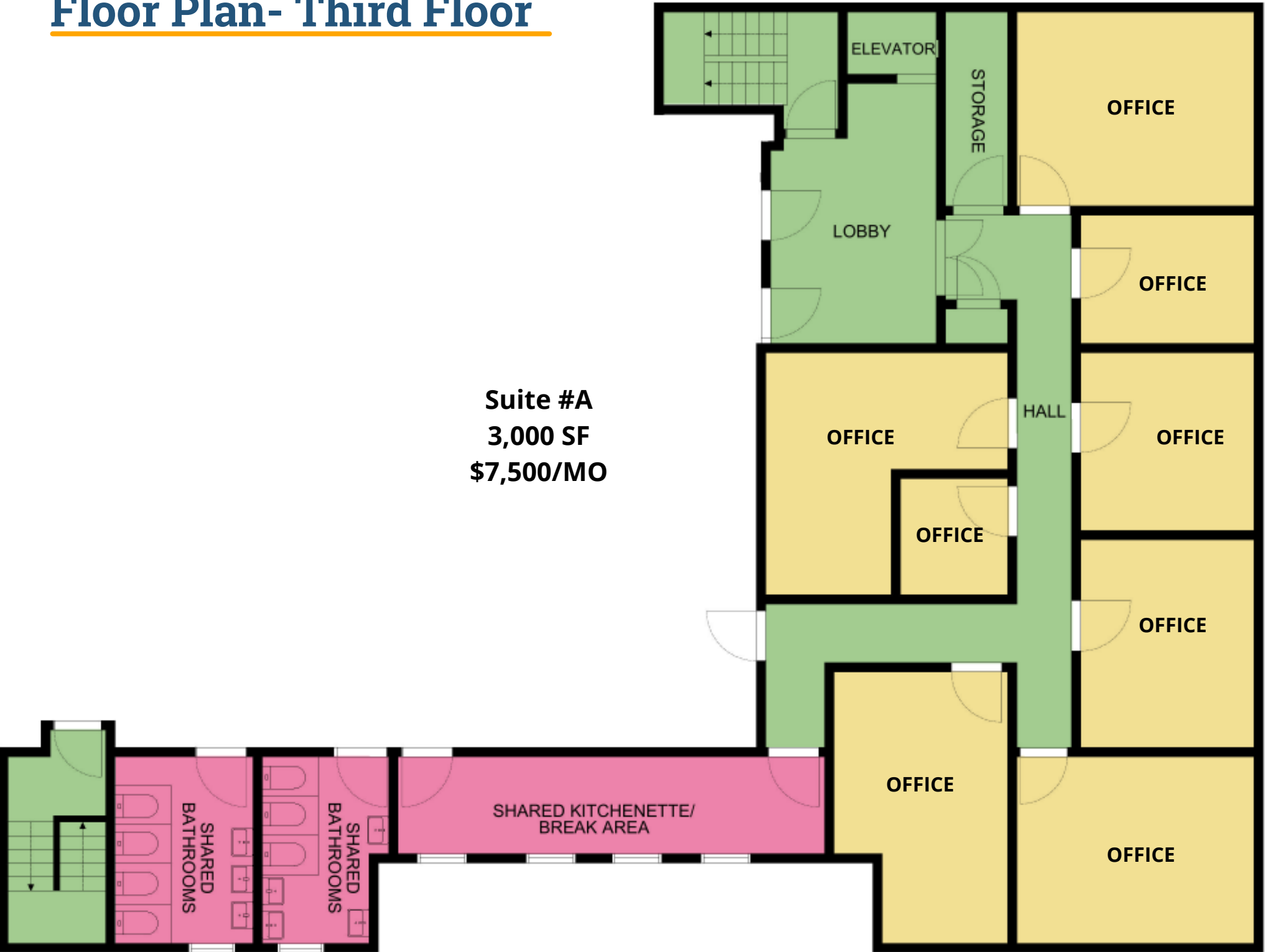
Floor Plan- Third Floor



Myrtle Avenue

Floor Plan- Third Floor

Suite #A
3,000 SF
\$7,500/MO



Myrtle Avenue

Property Photos





