

# FOR LEASE

## 3032 Steinway Street

Between 30th and 31st Avenue

Astoria, NY 11103



### COMMERCE



REALTY GROUP

Licensed Real Estate Brokerage



## Prime Steinway Street Opportunity

### Space Features

- 5,000 Sq. Ft. Retail Space
- Access To Full Basement
- 60 Ft. Frontage
- 3 Subway Stops Into Manhattan  
- Asking Rent: \$45 PSF

Jacob Ashkenazie    Marc Richter



### National Chain Neighbors



@COMMERCEREALTYGROUP



718-751-5799



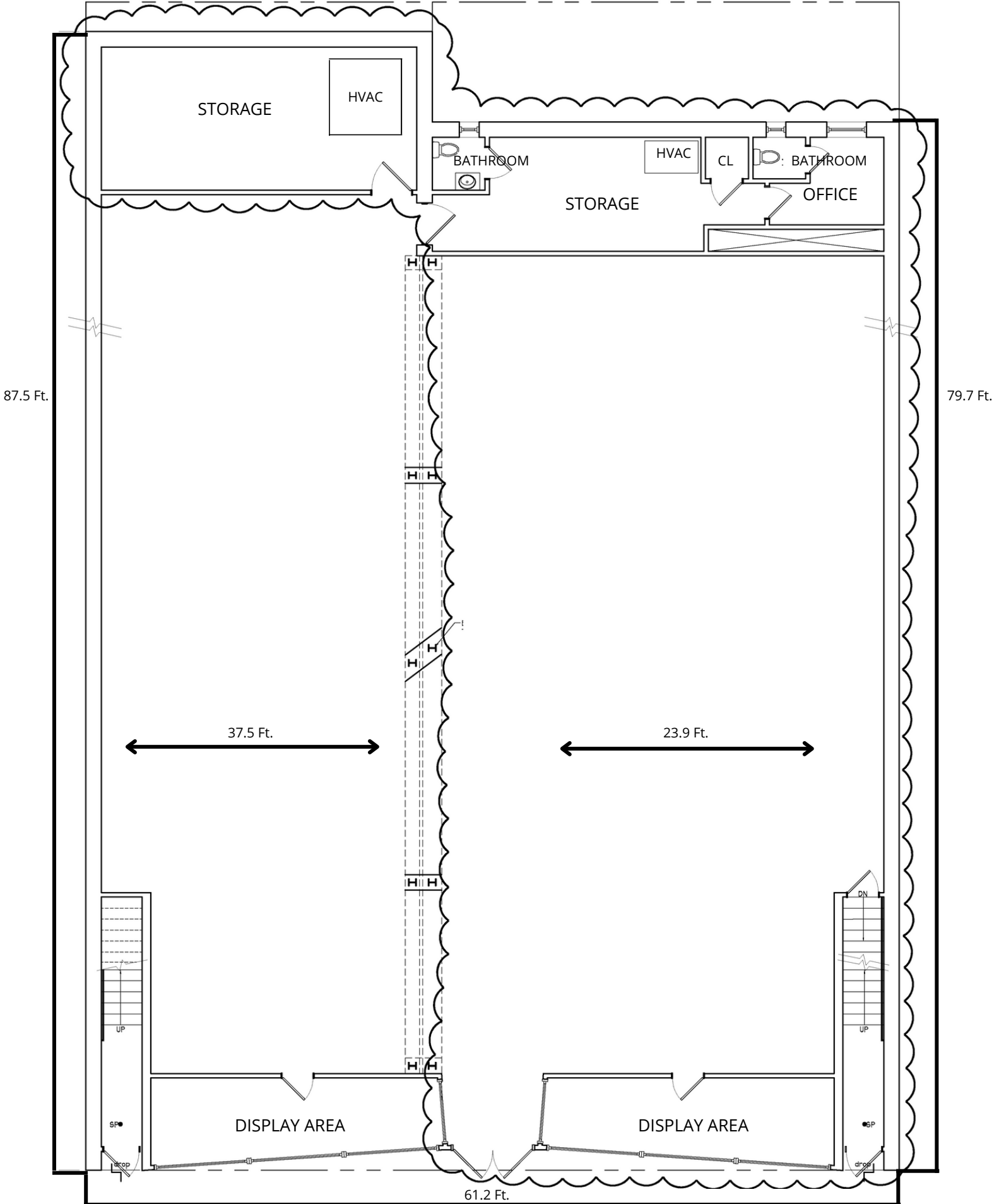
HTTP://CREG.NYC



INFO@CREG.NYC

# 3032 Steinway Street Astoria, NY 1103

## FIRST FLOOR



# 3032 Steinway Street Astoria, NY 11003

## CELLAR

