

83-15 PARSONS BLVD. JAMAICA, NY 11432

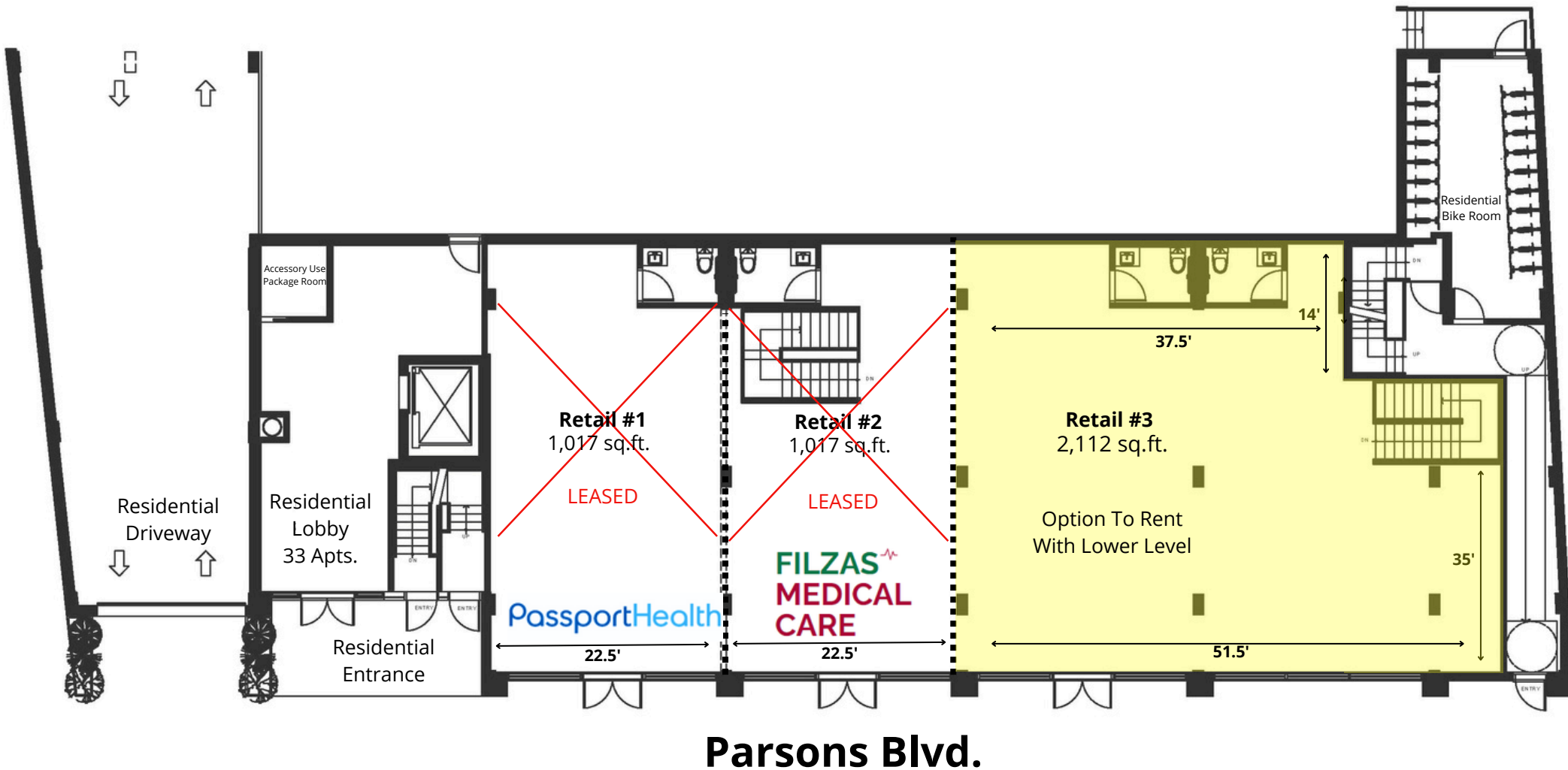


83-15 PARSONS BLVD.



83-15 PARSONS BLVD.

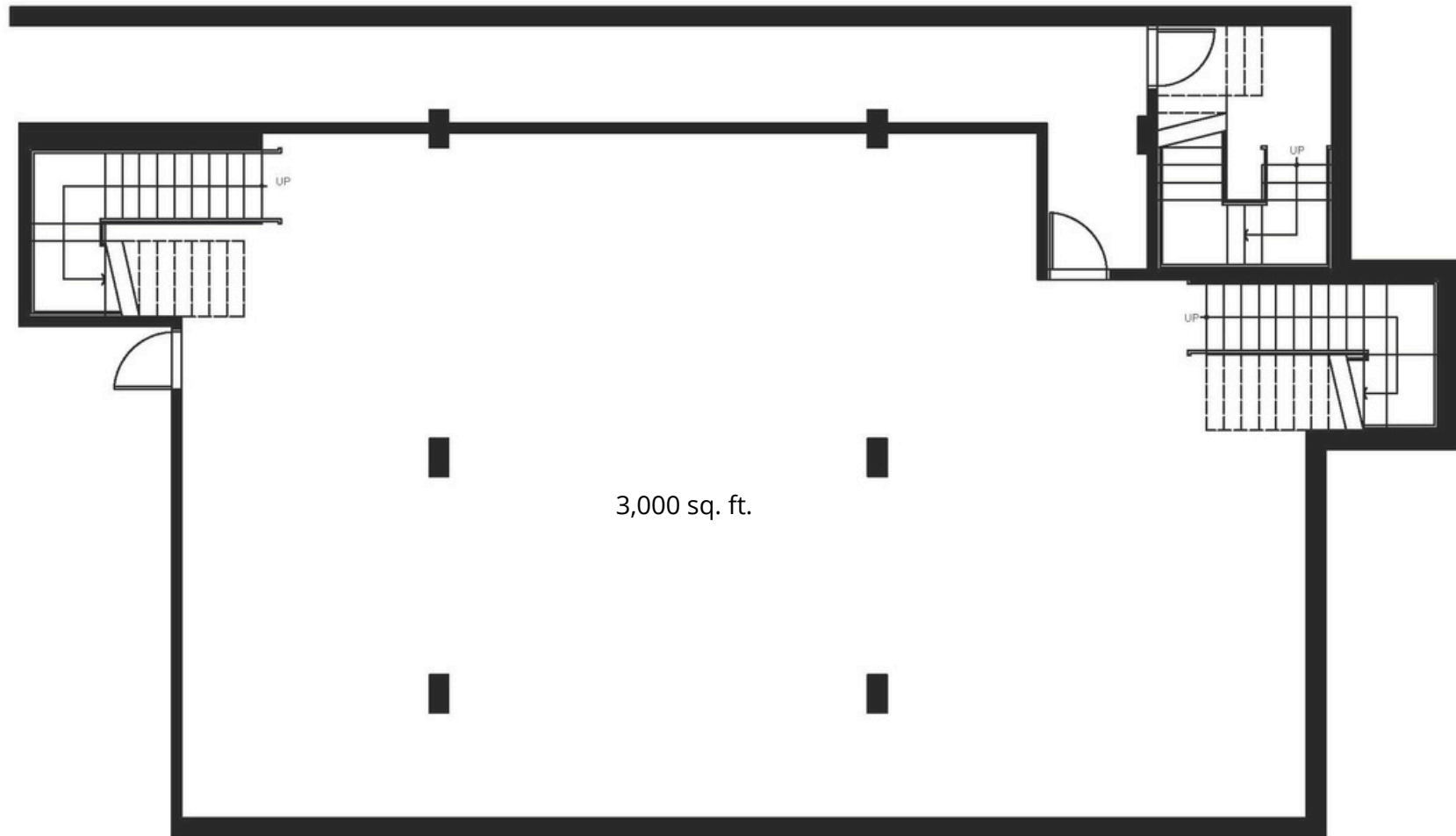
Ground Floor



718-751-5799 |  @commercerealtygroup | info@creg.nyc

83-15 PARSONS BLVD.

Lower Level



Parsons Blvd.

83-15 PARSONS BLVD.

Property Highlights

Located on Parsons Blvd. Right Off The Grand Central Parkway

- All Uses Considered
- Available NOW!



Retail Space #3:

- 2,112 Sq. Ft.
- Ceiling Height: 12.10" To Slab & 11.5" Finished
- Option To Rent With Lower Level

Lower Level:

- 3,000 Sq. Ft.
- Ceiling Height: 11 Ft.
- Separate Entrance Accessible From The Outside

Transportation:

- Bus Lines: Q25 & Q34
- Subway Lines:  & 

Asking Rent:

- Retail #3: \$46/Sq. Ft.
- Lower Level: \$20/Sq. Ft.



Marc Richter

C: 646-342-8959

marcrichter56@gmail.com